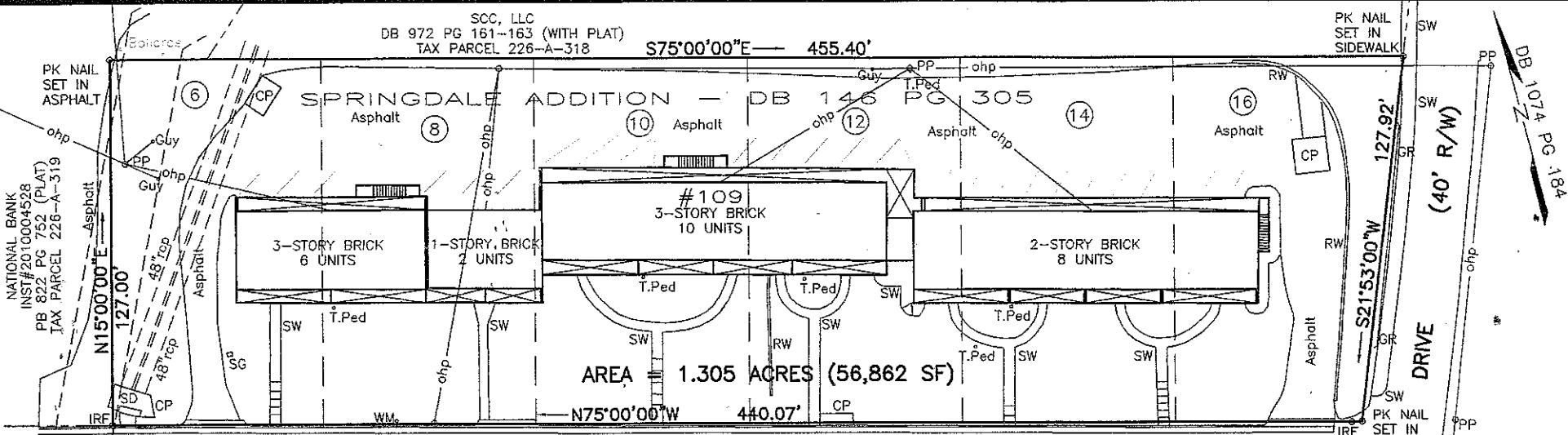


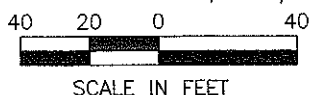
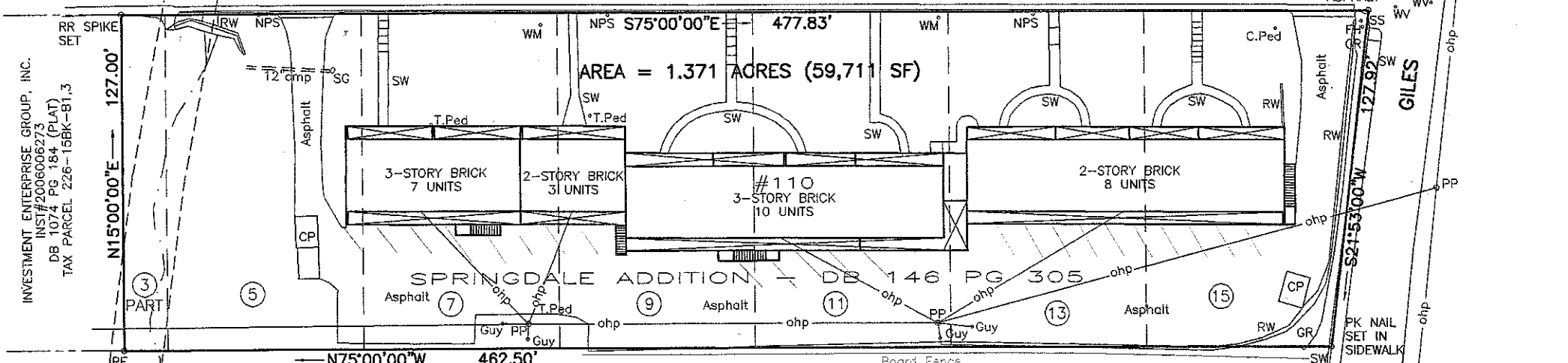
ABBREVIATIONS

- CO - Cleanout
- CP - Concrete Pad
- C.Ped - Television Pedestal
- FH - Fire Hydrant
- GR - Guard Rail
- HP - Heat Pump
- IRF - Iron Rod Found
- LP - Lamp Post
- MH - Manhole
- NPS - No Parking Sign
- PP - Power Pole
- RF - Rod Found
- RW - Retaining Wall
- SD - Storm Drain
- SG - Storm Grate
- SS - Stop Sign
- SW - Sidewalk
- T.Ped - Telephone Pedestal
- WM - Water Meter
- WV - Water Valve



EXISTING 20' SANITARY SEWER EASEMENT SHOWN APPROXIMATELY (DB 251 PG 426, PB 3 PG 83)

NORTHVIEW DRIVE (35' R/W)



AHV PN 2009106

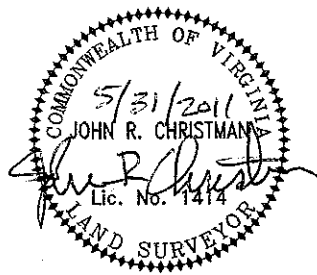
Altizer, Hodges, & Varney, Inc.

Consulting Engineers & Surveyors
 20 Midway Plaza Drive, Suite 200
 Christiansburg, Virginia 24073
 Phone: 540-382-9410 Fax: 540-382-9492
 Email: ahv-inc@ahv-inc.com Webpage: www.ahv-inc.com

GENERAL NOTES

1. THIS PLAT IS THE RESULT OF A CURRENT FIELD SURVEY.
2. THIS PLAT WAS PREPARED WITHOUT THE BENEFIT OF A TITLE REPORT.
3. SUBJECT PROPERTY IS TAX PARCELS 226-15 BKB-6,8,10,12,14,16 AND 226-15 BKB-3A,5,7,9,11,13,15.
4. SUBJECT PROPERTY INSTRUMENT #2005003761, DB 1074 PG 184 (PLAT).

LINDSAY B. WEST
 INST#2008009543
 PB 21 PG 64
 TAX PARCEL 226-A-313



PLAT OF SURVEY
 NORTHVIEW APARTMENTS
 LOTS 5 THROUGH 16 & 15' OF LOT 3
 BLOCK B, SPRINGDALE ADDITION
 FOR

CARRIAGE SQUARE, LTD
 TOWN OF BLACKSBURG
 MT. TABOR MAGISTERIAL DISTRICT
 MONTGOMERY COUNTY, VIRGINIA

DATE	DESIGNED	DRAWN	CHECKED
31 MAY 2011	JRC	BHA	JRC