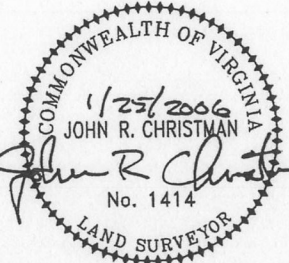
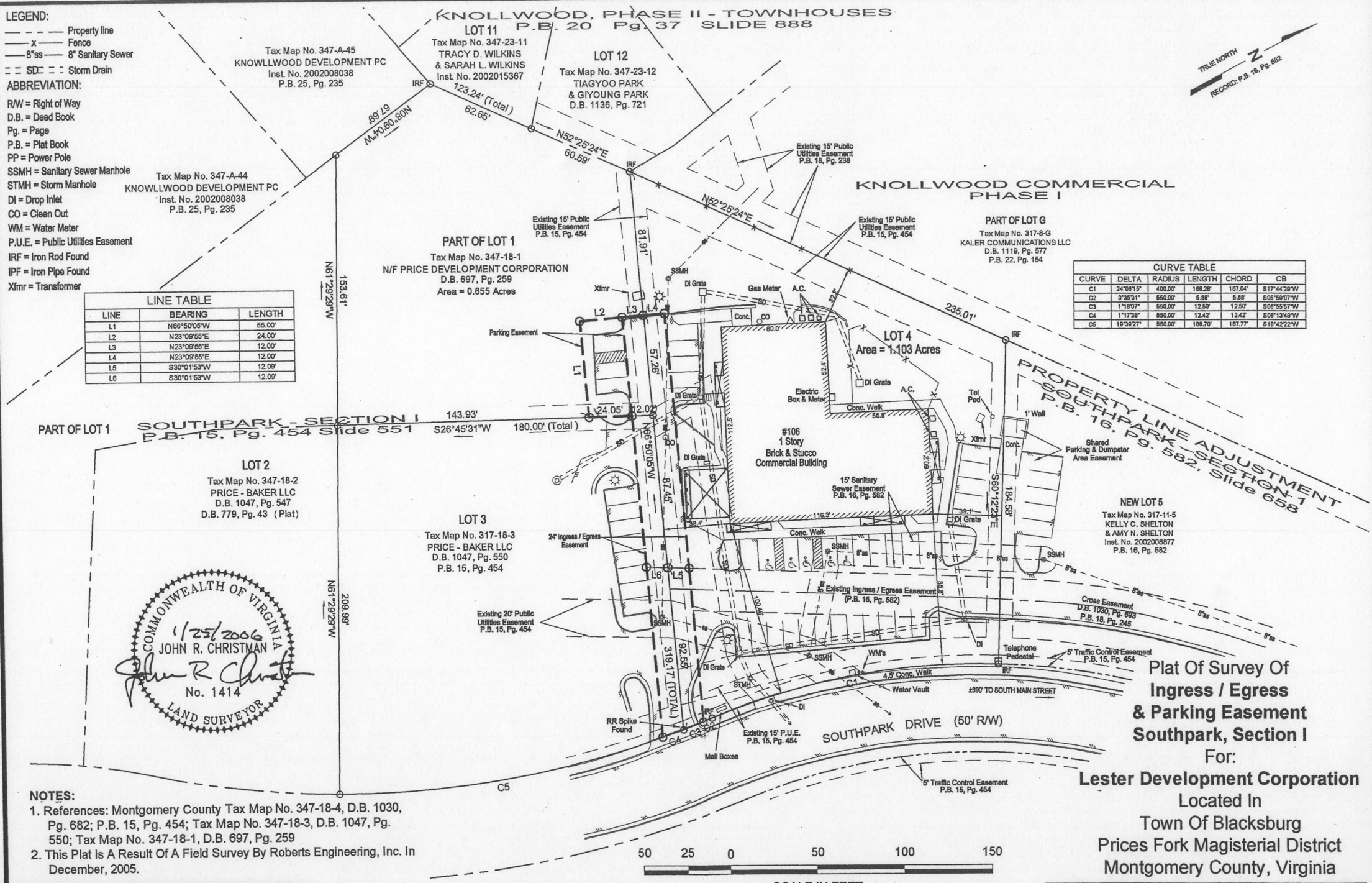
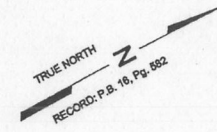


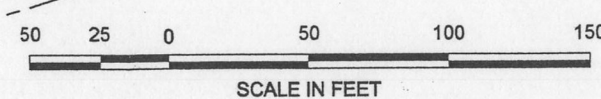
LEGEND:
 --- Property line
 -x- Fence
 8"as 8" Sanitary Sewer
 --- SD --- Storm Drain
ABBREVIATION:
 R/W = Right of Way
 D.B. = Deed Book
 Pg. = Page
 P.B. = Plat Book
 PP = Power Pole
 SSMH = Sanitary Sewer Manhole
 STMH = Storm Manhole
 DI = Drop Inlet
 CO = Clean Out
 WM = Water Meter
 P.U.E. = Public Utilities Easement
 IRF = Iron Rod Found
 IPF = Iron Pipe Found
 Xlmr = Transformer

LINE TABLE		
LINE	BEARING	LENGTH
L1	N86°50'05"W	55.00'
L2	N23°09'55"E	24.00'
L3	N23°09'55"E	12.00'
L4	N23°09'55"E	12.00'
L5	S30°01'53"W	12.09'
L6	S30°01'53"W	12.09'

CURVE TABLE					
CURVE	DELTA	RADIUS	LENGTH	CHORD	CB
C1	24°09'15"	400.00'	168.29'	187.04'	S17°44'29"W
C2	0°35'31"	550.00'	5.89'	5.89'	S02°59'07"W
C3	1°18'07"	550.00'	12.50'	12.50'	S08°55'57"W
C4	1°17'39"	550.00'	12.42'	12.42'	S08°13'48"W
C5	16°39'22"	550.00'	188.70'	187.77'	S18°42'22"W



NOTES:
 1. References: Montgomery County Tax Map No. 347-18-4, D.B. 1030, Pg. 682; P.B. 15, Pg. 454; Tax Map No. 347-18-3, D.B. 1047, Pg. 550; Tax Map No. 347-18-1, D.B. 697, Pg. 259
 2. This Plat Is A Result Of A Field Survey By Roberts Engineering, Inc. In December, 2005.



**Plat Of Survey Of
 Ingress / Egress
 & Parking Easement
 Southpark, Section I
 For:
 Lester Development Corporation
 Located In
 Town Of Blacksburg
 Prices Fork Magisterial District
 Montgomery County, Virginia**

DRAWN AIF	CHECKED JRC	SCALE As Shown	Date: Jan. 20, 2005 Revised: Jan. 25, 2006	JOB NO. 2005062.1
--------------	----------------	-------------------	---	----------------------

REI ROBERTS ENGINEERING INC.
 P.O. BOX 332
 BLACKSBURG, VA 24063
 (540) 853-5924